

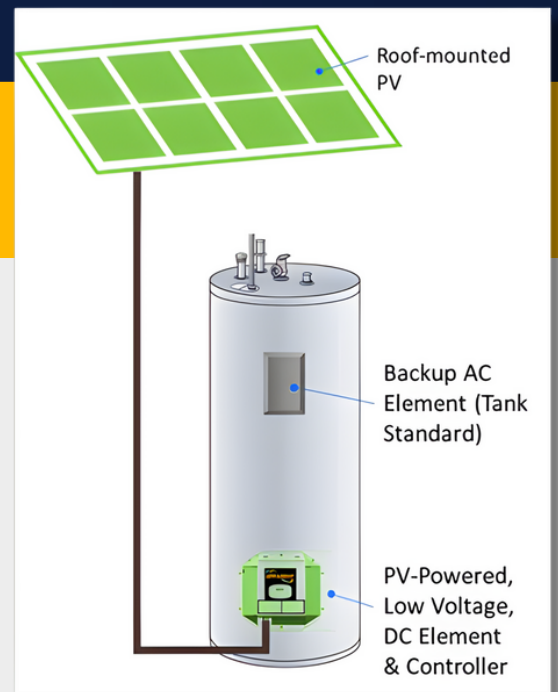


POWERING THE FUTURE WITH PV WATER HEATING

The **EXEL Water Heating System** is poised to play a key role in grid-responsive DERs and enable commercial developers and utilities to attain ESG commitments using lower cost, energy efficient water heating.

- ✓ Minimal plumbing and electrical work
- ✓ Low Voltage: Less than 60V
- ✓ Advanced Heating Element
- ✓ Powered by 4 PV panels

WORKS EVEN ON CLOUDY DAYS



Contact Us

exelwh@apparent.com

EXEL Water Heater

Electrical Information

Input Characteristics	
Input Voltage Range	12.5VDC – 52 VDC
DC Input Protection	70VDC; 50A Fuse Protection Reverse Polarity Protection Short Circuit Protection
Max Connector Ratings	600V, 67A 10 – 6 AWG
Output Characteristics	
Output Power Max	1300 W
Max Connector Ratings	600V, 45A 18 – 8 AWG
Output Protection	Short Circuit Protection, Load faults
Temperature Settings	
Default Factory Setting	125°F (51.7°C) ; 140°F (60°C) with thermostatic mixing valve
Max Settable Water Temperature	158°F (70°C)
Overtemperature Protection	170°F ± 5°F (77°C)
Overtemperature Release	140°F ± 11°F (60°C)
Environmental Characteristics	
Operating Temperature Range; Ambient	-10°C - 40°C
Relative Humidity	95% Non-Condensing
Communications	
2.4GHz WiFi 802.11 b/g/n	